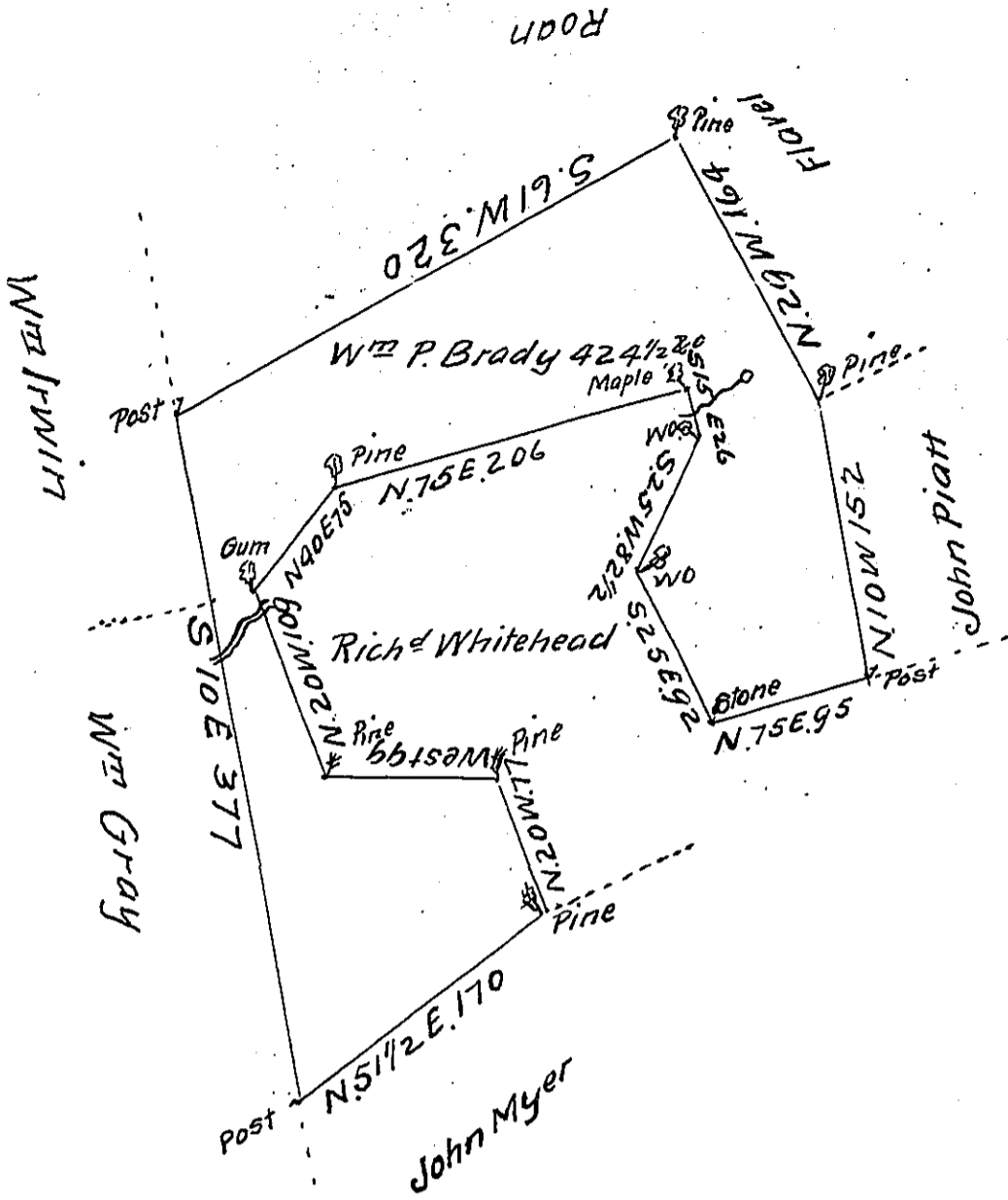


Hazle -  
Luzerne.



A Draft of a tract of Land called \_\_\_\_\_ situate near lands of  
 of Isaiah Hughes in the County of Northum<sup>d</sup>. Catawissey Township Con-  
 taining Four hundred & twenty four acres 1/2 & allow<sup>ce</sup>.

Surveyed the 13<sup>th</sup> day of October 1794 by virtue of a warrant dated  
 the 18<sup>th</sup> day of November 1793 to W<sup>m</sup> P. Brady

Daniel Brodhead Esq<sup>r</sup> } by W<sup>m</sup> Gray D.S.  
 Surv. Gen! }

IN TESTIMONY that the above is a copy of the original remaining on file in  
 the Department of Internal Affairs of Pennsylvania, made  
 conformably to an Act of Assembly approved the 16th day of  
 February, 1833, I have hereunto set my Hand and caused  
 the Seal of said Department to be affixed at Harrisburg,  
 this eighteenth day of September 1911

*Henry Howell*  
 Secretary of Internal Affairs.